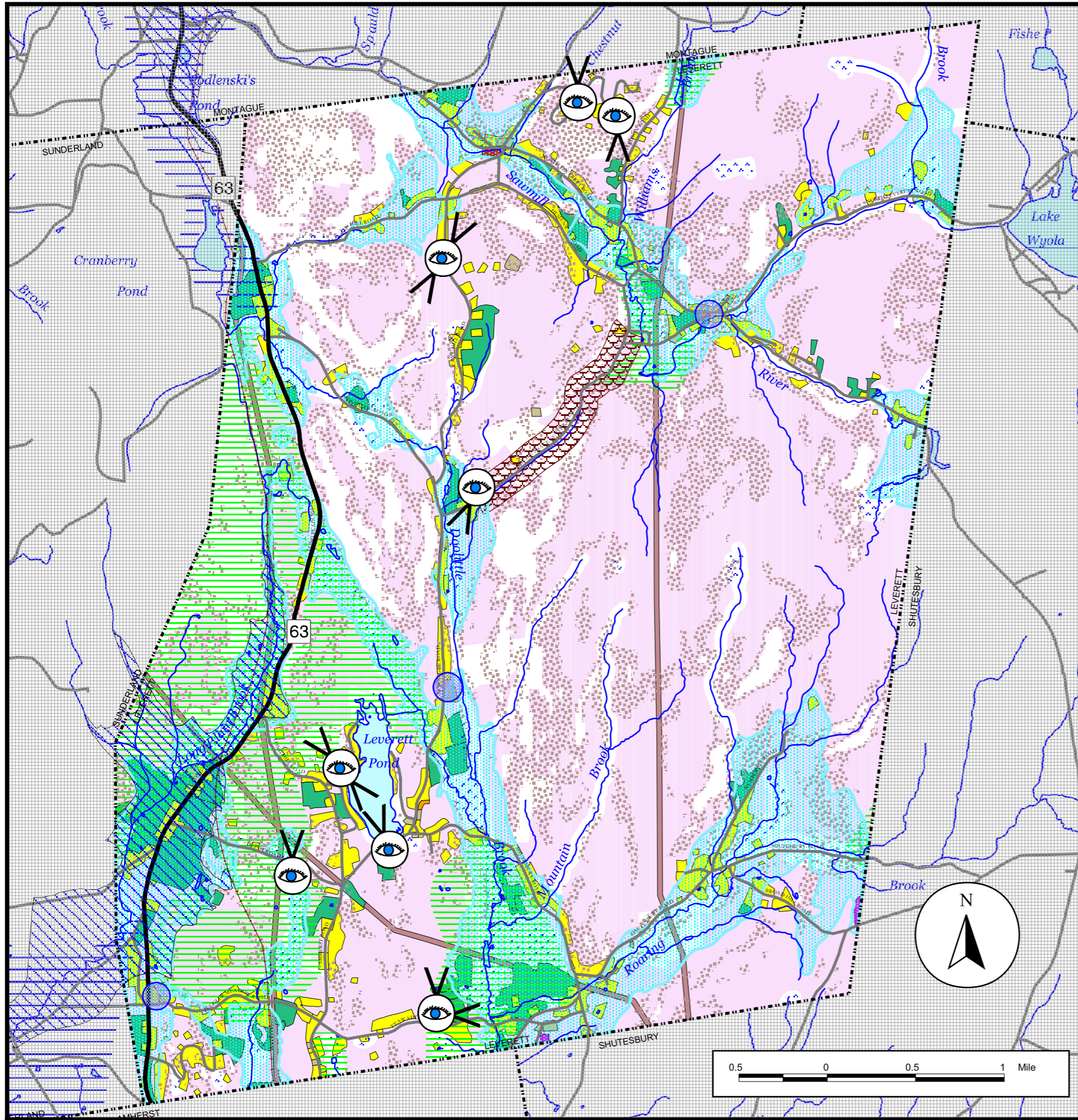


Town of Leverett

Community Development Plan

Land Use Suitability



Legend

	Potentially developable, has no absolute constraints		Town line
	Aquifer Protection District		Rail lines
	Interim Wellhead Protection Area		Roads
	Rattlesnake Gutter Conservation Area		Streams and rivers
	Potential aquifer: yield 25-1,000 gallons per minute		Farmland (1999)
	NHESP sensitive species habitats (Priority Habitats of Rare Species, Estimated Habitats of Rare Wildlife, BioMap Core Habitat)		Transmission lines
	Slope 15-25%		Water body
	Zone II areas		National Wetland Inventory wetland
	Scenic view with directional indicator		Residential (Developed land 1999)
			Commercial
			Industrial
			Urban open
			Transportation
			Landfill, waste treatment

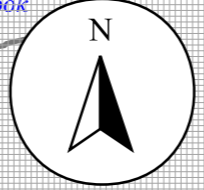
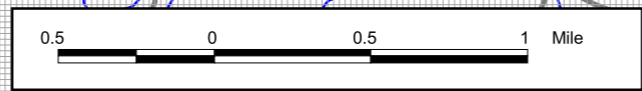
Map Sources:

Map produced by The Franklin Regional Council of Governments Planning Department. GIS data sources include the FRCOG Planning Department, the Massachusetts Highway Department and MassGIS. Digital data obtained from MassGIS represent the efforts of the Massachusetts Executive Office of Environmental Affairs and its agencies to record information from the sources cited in the associated documentation. EOEAO maintains an ongoing program to record and correct errors in the GIS data that are brought to its attention. EOEAO makes no claims as to the reliability of the GIS data or as to the implied validity of any uses of the GIS data. EOEAO maintains records regarding all methods used to collect and process these digital data and will provide this information on request. Executive Office of Environmental Affairs, MassGIS EOEAO Data Center, 251 Causeway Street, Suite 900, Boston, MA, 617-626-1000.

Road data provided by Massachusetts Highway Department. Town line, rail line, transmission line, river, stream, pond, National Wetlands Inventory, slope, soil, interim wellhead protection area, aquifer, and land use data provided by MassGIS.

NHESP 2003 Estimated Habitats of Rare Wildlife: For use with the Massachusetts Wetlands Protection Act regulations (310CMR 10).
 NHESP 2003 Priority Habitats for State-protected Rare Species: NOT equivalent to 'Significant Habitat' as designated under Massachusetts Endangered Species Act.
 NHESP BioMap Core Habitat.

Note: Depicted boundaries are approximate and are intended for planning purposes only. Portions of the source data were obtained from 1:100,000 scale maps, therefore the accuracy of the line work on this map is +/- 100 feet.



FRANKLIN REGIONAL COUNCIL OF GOVERNMENTS
 Main Office: 413-774-3167
 425 Main Street
 Greenfield, Massachusetts 01301

