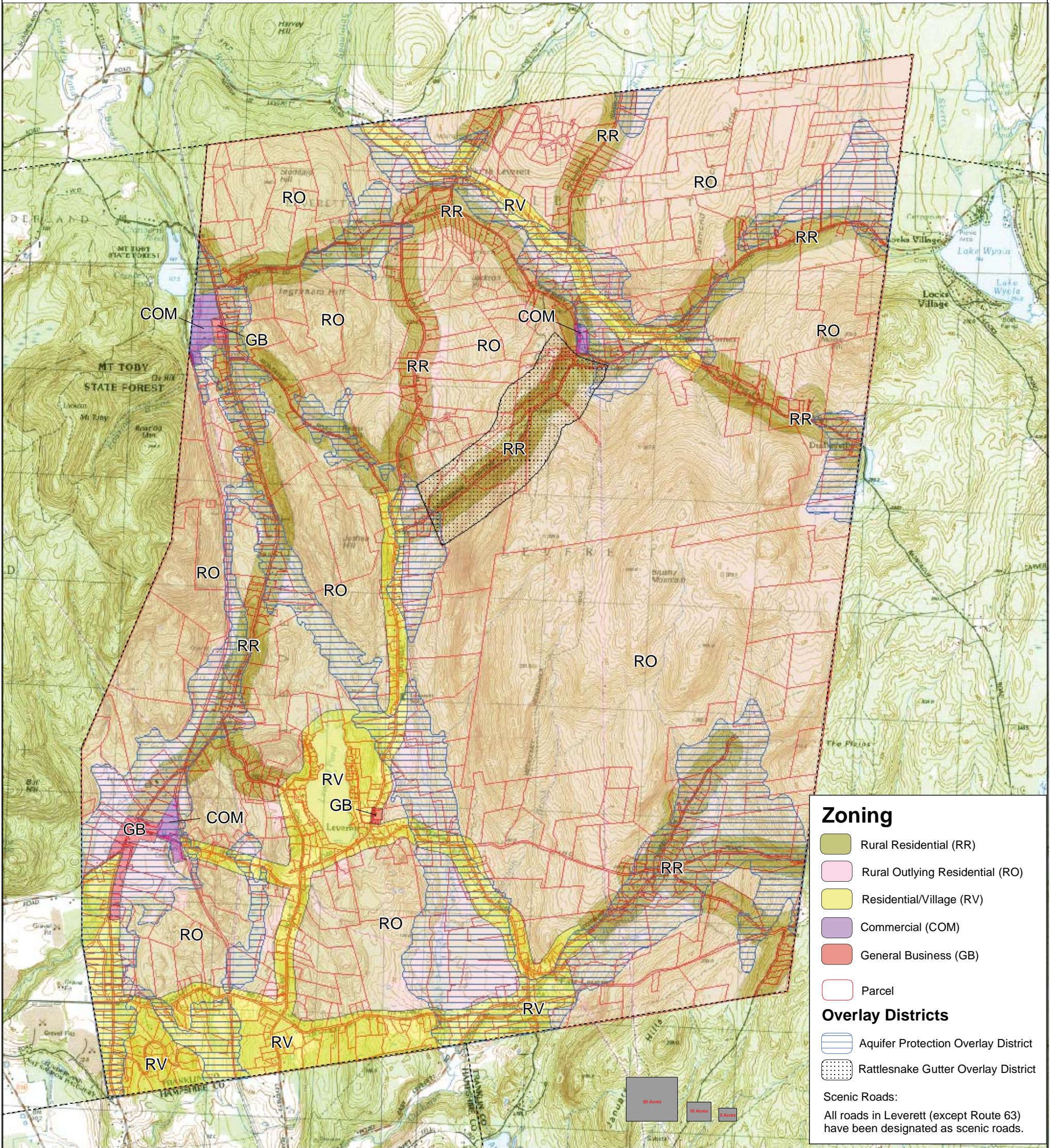
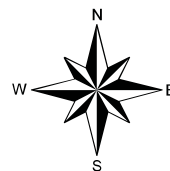


# Town of Leverett Official Zoning Map

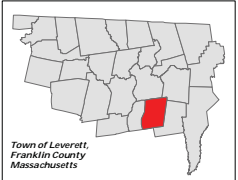
March 11, 2008



**FRANKLIN REGIONAL COUNCIL OF GOVERNMENTS**  
Main Office: 413-774-3167  
425 Main Street  
Greenfield, Massachusetts 01301



**Map Sources:**  
Map produced by The Franklin Regional Council of Governments Planning Department. GIS data sources include the FRCOG Planning Department, the Massachusetts Highway Department and MassGIS. Digital data obtained from MassGIS represent the efforts of the Massachusetts Executive Office of Environmental Affairs and its agencies to record information from the sources cited in the associated documentation. EOEA maintains an ongoing program to record and correct errors in the GIS data that are brought to its attention. EOEA makes no claims as to the reliability of the GIS data or as to the implied validity of any uses of the GIS data. EOEA maintains records regarding all methods used to collect and process these digital data and will provide this information on request. Executive Office of Environmental Affairs, MassGIS EOEA Data Center, 251 Causeway Street, Suite 900, Boston, MA, 017-626-1000.  
USGS 7.5 minute series topographic quadrangles scanned to create digital USGS 7.5 minute ArcInfo coverages. The resulting scanned map is projected into NAD83 Massachusetts State Plane meters. Data provided by MassGIS.  
Zoning data provided by the Town.  
Note: Dashed boundaries are approximate and are intended for planning purposes only. Portions of the source data were obtained from 1:100,000 scale maps, therefore the accuracy of the line work on this map is +/- 100 feet. The boundaries of the town's zoning districts have been snapped to the current Massachusetts Highway Department Road Inventory file. The road inventory file differs than the USGS roads in places therefore inaccuracies may exist when viewing the USGS overlay.



March 11, 2008

Map compiled by Ryan Cleary, FRCOG Planning Dept. 3/8/08, rjoseph@frco.org, jerry@frco.org, and rcc@frco.org