



This map is for planning and educational uses only. It is not to be used by itself for legal boundary definition, regulatory interpretation or navigational purposes. Map is displayed at larger than nominal scale. Use caution interpreting positional accuracy. Towns: Digitized at MassGIS from stable based films prints of the USGS 1:25,000-scale quad sheets. USGS Quad Images: Scanned by MassGIS at 250 dots per inch, 256 colors. Source dates range from 1967-1990.



Massachusetts
Geographic
Information
System

Massachusetts Executive Office of Environmental Affairs - 2002



Figure 1. Leverett Pond shown on USGS Quadrangle (Mass GIS).

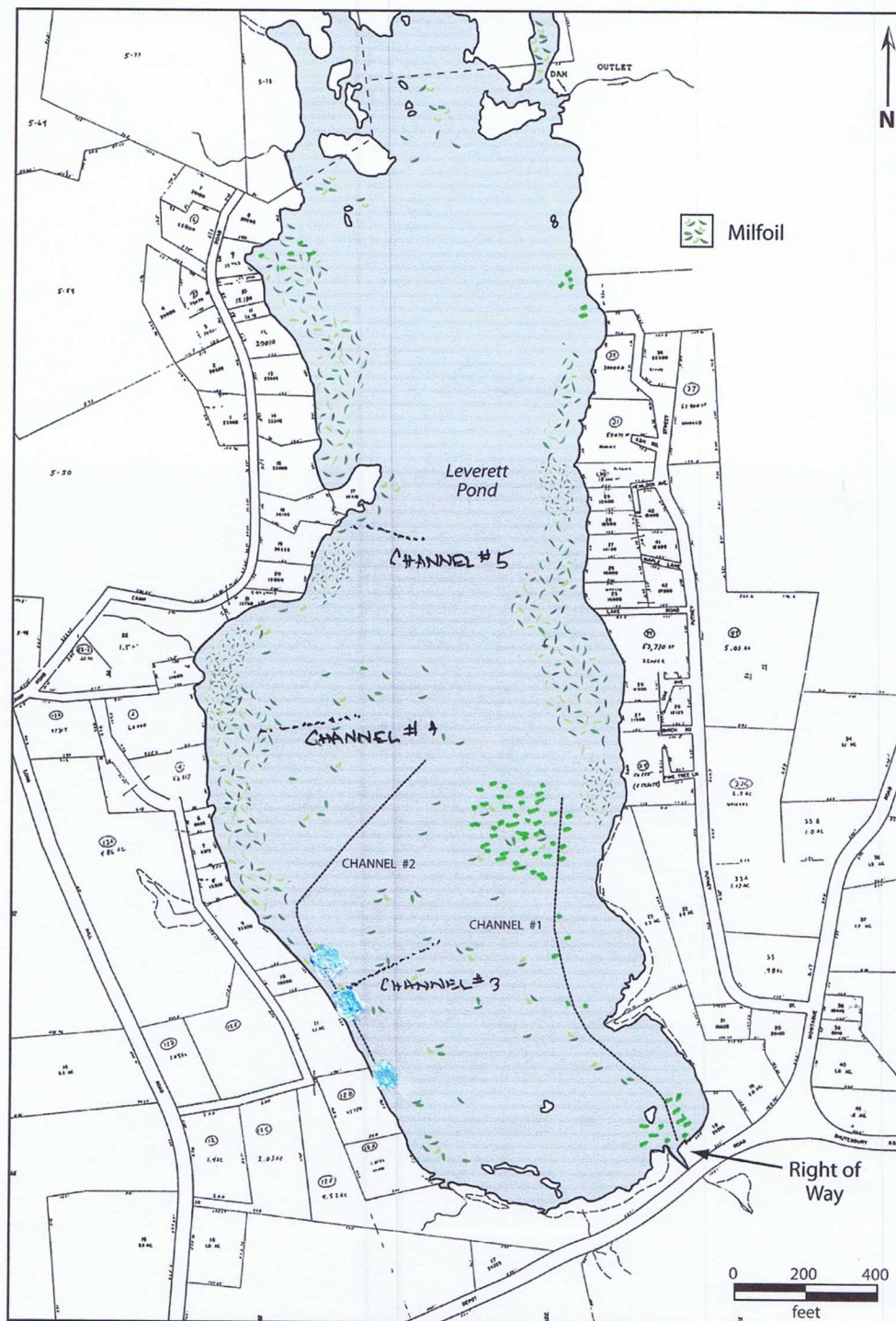


Figure 2. Leverett Pond showing the location of milfoil infestations.

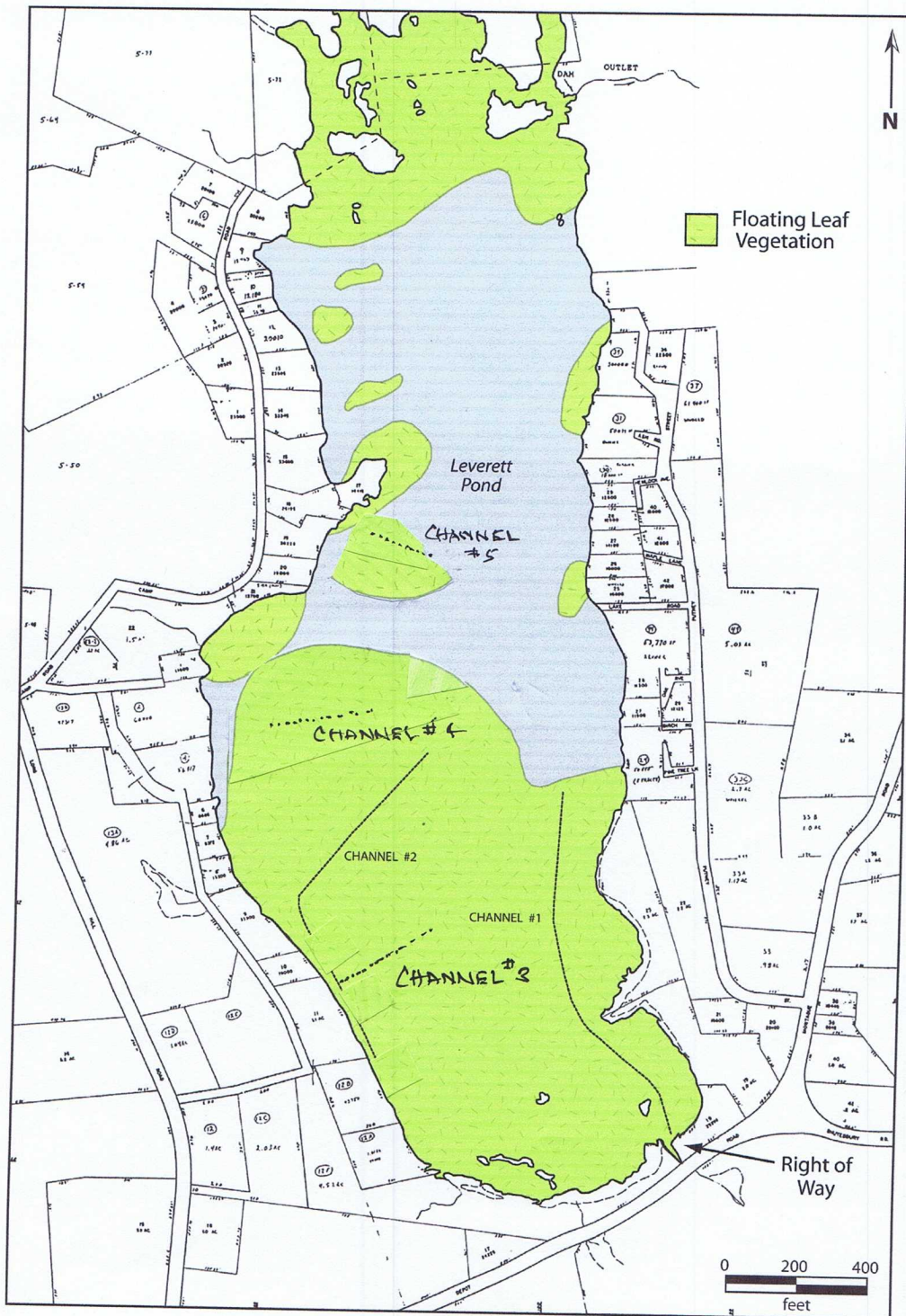


Figure 3. Leverett Pond showing the locations of floating leaf vegetation.

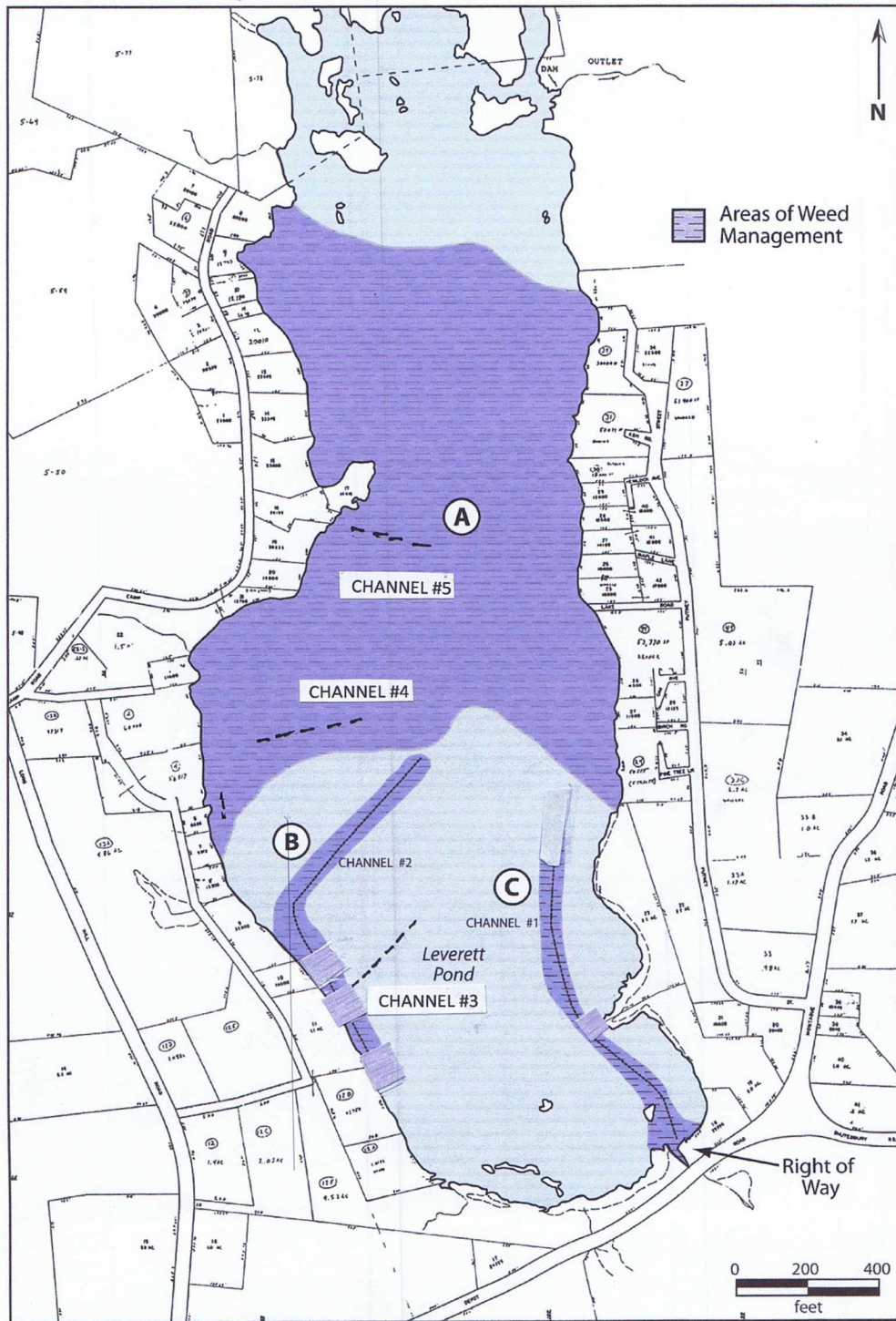


Figure 4. Areas proposed for weed management. A: Main water body with Public Access (right-of-way), waterfronts and intermittent open water; B: Circulation and Boating Channels #2-5; C: Boating and circulation Channel #1 and Public Access (right-of-way).

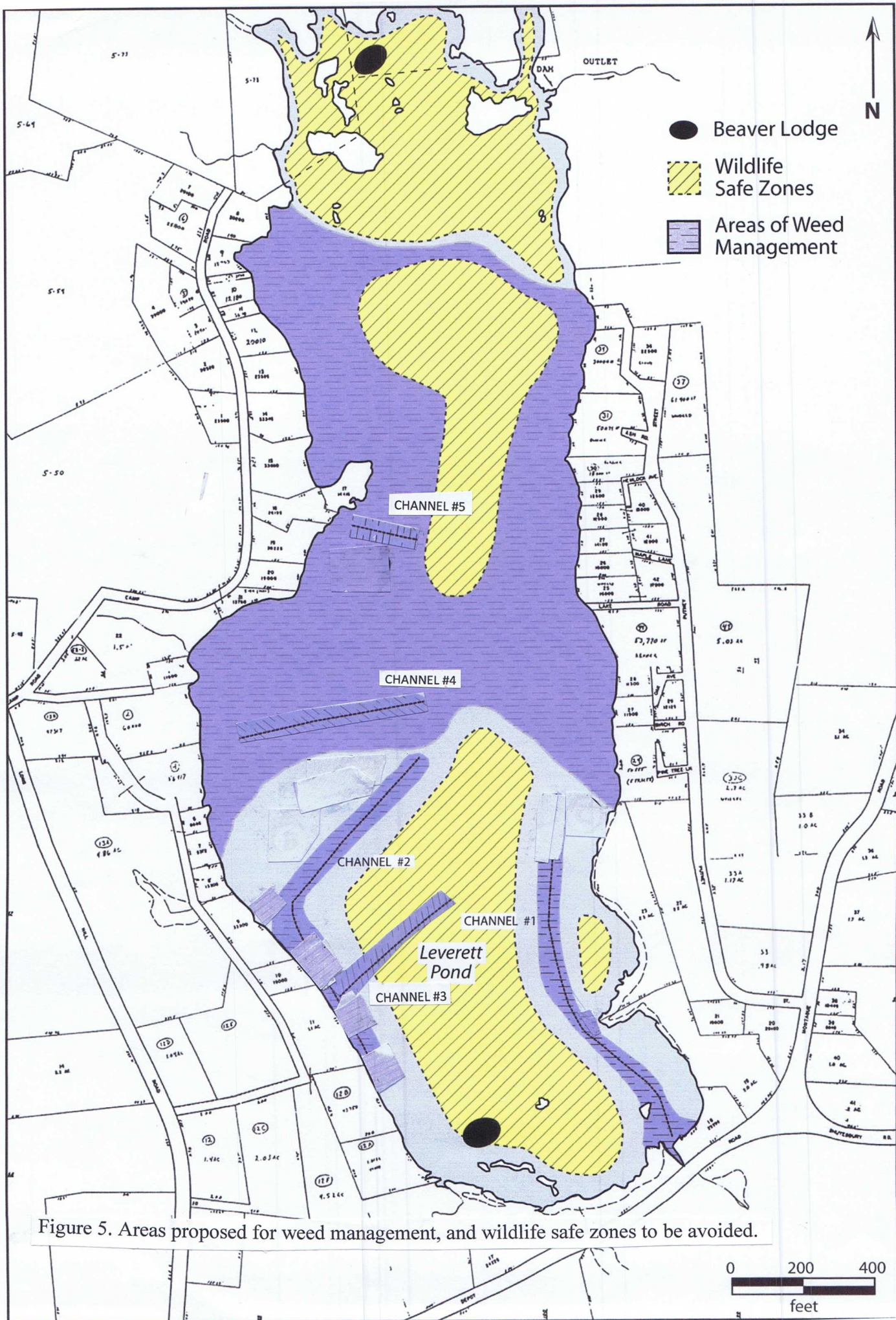


Figure 5. Areas proposed for weed management, and wildlife safe zones to be avoided.

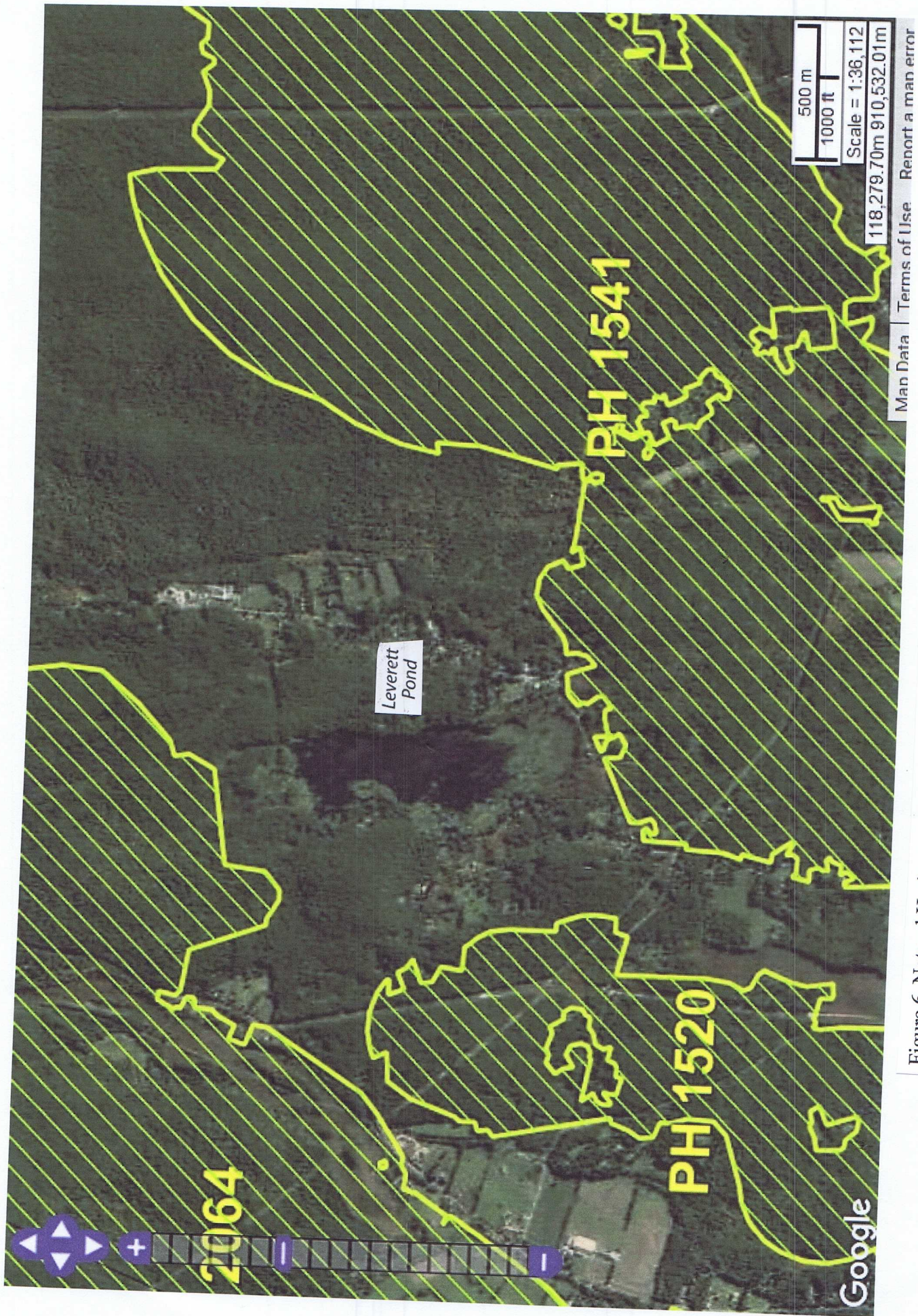


Figure 6. Natural Heritage and Endangered Species program map showing Leverett Pond in relation to areas of concern.

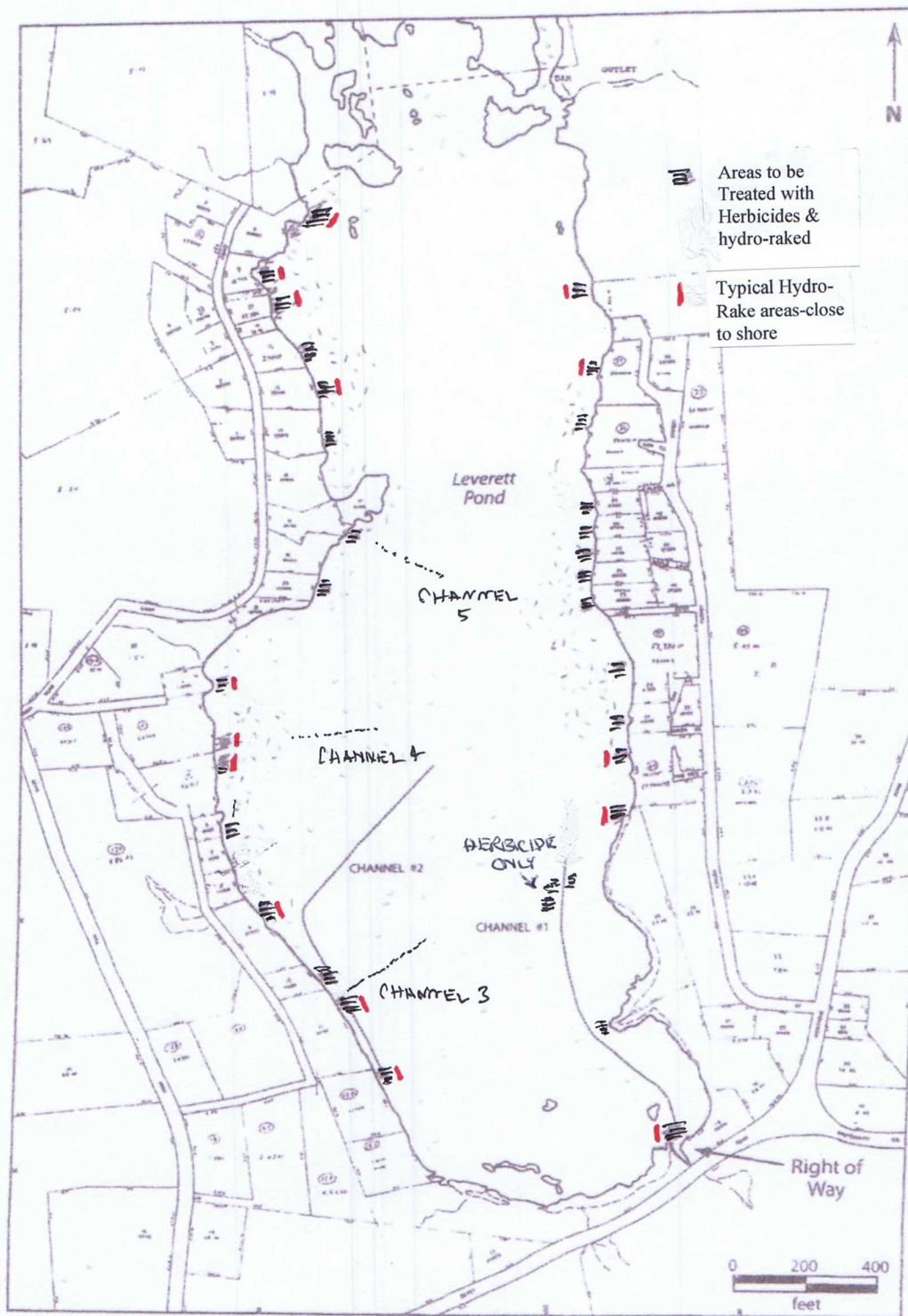


Figure 7. Areas to be treated with herbicides (approximately 8 acres), as well as typical areas to be hydro-raked (2-4 acres). Hydro-rake areas are 1/8 acre or less each and are within the herbicide area. Channels shown are to be harvested.