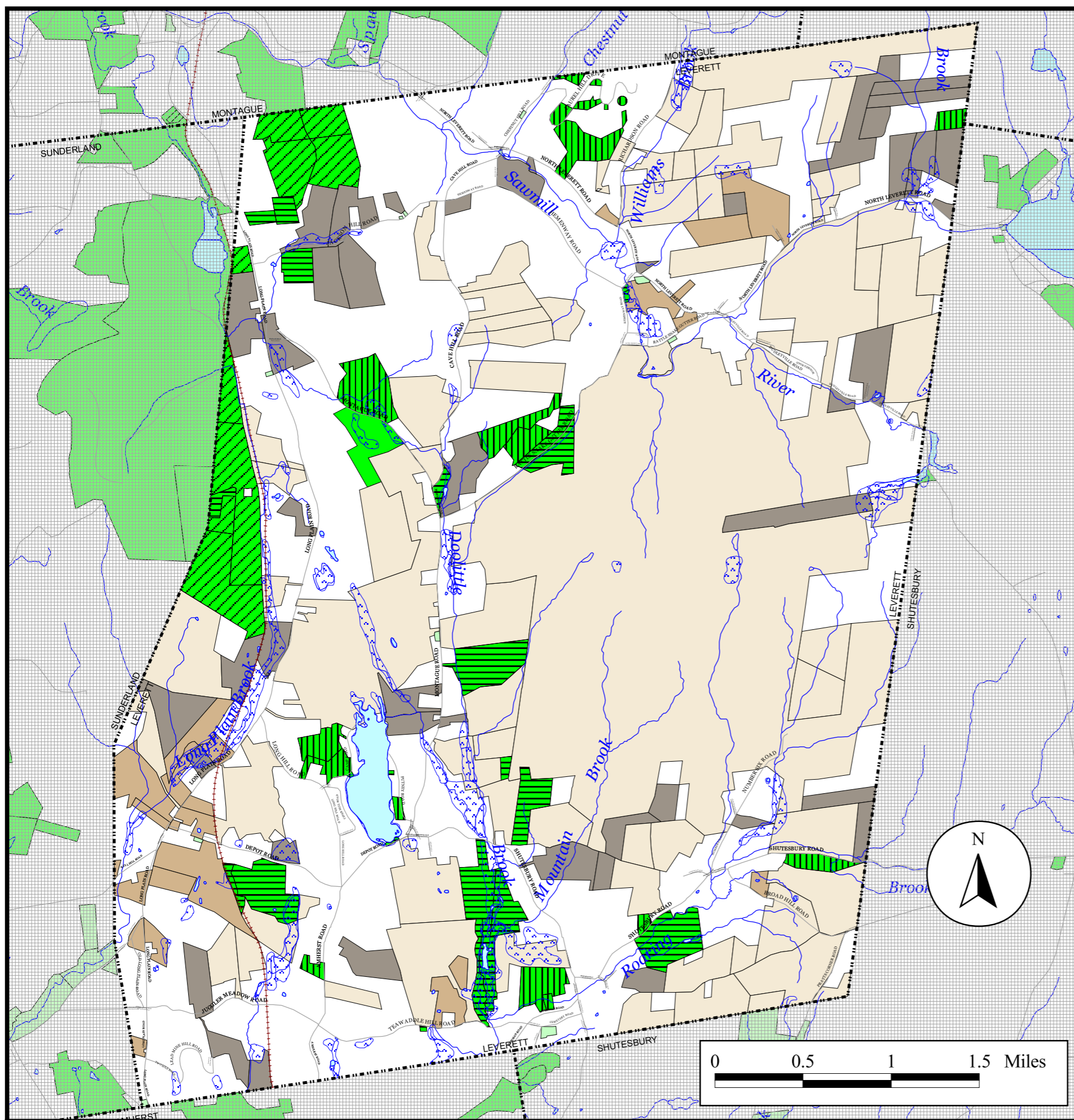


# Town of Leverett

## Community Development Plan

### Protected Open Space



#### Legend

- Town Line
- Rail Lines
- Roads
- Streams and Rivers
- Water
- Wetland

#### Open Space

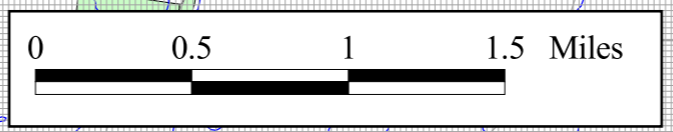
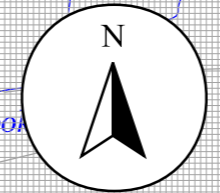
- Open Space with Permanent Protection
- State-owned (DCR, DFG, UMass.)
- Town-owned
- Privately-owned
- Open Space with Limited Protection (includes cemeteries)
- Chapter 61 (Temporary protection)
- Chapter 61A (Temporary protection)
- Chapter 61B (Temporary protection)

#### Map Sources:

Map produced by The Franklin Regional Council of Governments Planning Department. GIS data sources include the FRCOG Planning Department, the Massachusetts Highway Department and MassGIS. Digital data obtained from MassGIS represent the efforts of the Massachusetts Executive Office of Environmental Affairs and its agencies to record information from the sources cited in the associated documentation. EOEa maintains an ongoing program to record and correct errors in the GIS data that are brought to its attention. EOEa makes no claims as to the reliability of the GIS data or as to the implied validity of any uses of the GIS data. EOEa maintains records regarding all methods used to collect and process these digital data and will provide this information on request. Executive Office of Environmental Affairs, MassGIS EOEa Data Center, 251 Causeway Street, Suite 900, Boston, MA, 617-626-1000.

Road data provided by Massachusetts Highway Department. Town line, rail line, river, stream, pond, and National Wetlands Inventory data provided by MassGIS. Open space data provided by the Town of Leverett.

Note: Depicted boundaries are approximate and are intended for planning purposes only. Portions of the source data were obtained from 1:100,000 scale maps, therefore the accuracy of the line work on this map is +/- 100 feet.



**FRANKLIN REGIONAL COUNCIL OF GOVERNMENTS**  
 Main Office: 413-774-3167  
 425 Main Street  
 Greenfield, Massachusetts 01301

